



American College of Nurse-Midwives

# 58<sup>th</sup> Annual Meeting & Exhibition

Nashville, Tennessee ★ May 29–June 2, 2013



## Midwives in Harmony for Women's Health



## Program Highlights

What's New .....	2
Premier Speakers .....	4
Events .....	6
Schedule at a Glance .....	8
The Exhibition .....	10
Hotel & Travel .....	10

# Join Us!

The **ACNM Annual Meeting** is the premier opportunity for midwives, students, and other women's health care providers to polish professional and clinical skills, learn the latest evidence-based research, share knowledge and experiences, and celebrate the work that midwives are doing to advance maternity and women's health care.

## What's New

ACNM is using attendee feedback to create an even richer, memorable experience for the 58<sup>th</sup> ACNM Annual Meeting & Exhibition. Here's what's in store for 2013:

### 1. Nashville, Home of the ACNM 58<sup>th</sup> Annual Meeting & Exhibition

Experience for yourself what makes Nashville special. It's a city that resonates with life and vibrates to the beat of every kind of song. It's a town that sizzles with American music, Southern hospitality, unbelievable cuisine, and a boundless spectrum of nightlife.

### 2. Advanced Life Support in Obstetrics (ALSO)

For the first time ever, ACNM is offering the Advanced Life Support in Obstetrics (ALSO) program—an interactive course that equips maternity care providers with the knowledge and skills to manage potential emergencies during the perinatal period. Come learn from 12 expert faculty—7 of whom are CNMs!

### 3. The Farm Midwifery Center

Tennessee is home to The Farm Midwifery Center, which played an historic role in the development of US midwifery. ACNM has invited The Farm's founder Ina May Gaskin as a closing premier speaker and is arranging tours of The Farm. Stay tuned to [www.midwife.org/am](http://www.midwife.org/am) for more details and signup instructions.

### 4. Focus on Diversity

Midwifery is a profession that has long embraced diversity—from the foothills of Kentucky to the streets of New York City. Recognizing the need for the midwifery workforce to reflect the diversity of the populations it serves, ACNM is preparing to build a national diversification strategy for the profession and the association. See page 4 for premier speaker Beverly Malone's session on strategies for reshaping and transforming the present reality of midwifery and nursing to better reflect the diversity of our nation and meet the health care needs of those we serve.



## RSVP on Facebook

Connect with other attendees and let your friends know you'll be at the ACNM 58<sup>th</sup> Annual Meeting in Nashville at <http://on.fb.me/13ebt5>.

### 5. Special Prices for Students

For the fourth year in a row, ACNM has frozen registration prices for students. We're also offering workshops for just 50% of the full fee.

### 6. Exam Prep— Bigger and Better

We're listening: ACNM student midwives can now take advantage of an added half day of case studies as well as a full day of review. Register for one day or both—there's no better way to prepare and build your confidence for the American Midwifery Certification Board certification exam.

### 7. A Party to Remember

The ever-popular Awards Ceremony and Midwifery Celebration gets better every year. In 2013, attendees have the option to reserve a seat at the plated dinner for \$10 at the semi-formal awards ceremony. As always, the after party is free for all registered attendees and is guaranteed to keep you dancing 'til midnight!

### 8. Quality over Quantity

Get the continuing education you need and the professional connection you crave for less of your valuable time. By attendee request, we've shortened the length of the ACNM Annual Meeting so you can get back sooner to the job, family, studies, and other commitments that can't go on without you.

# Midwives in Harmony for Women's Health

## About This Year's Theme

Midwives are attending a record proportion of US births, and the profession is poised for continued growth in the years to come. The ACNM 58<sup>th</sup> Annual Meeting celebrates our diversity of practice, perspectives, and backgrounds, and calls on us to channel these strengths in new and more effective ways to enhance the health care of women throughout the lifespan.

The midwifery profession has a vibrant history of championing the unique gifts, rights, and needs of every woman. In 2013, ACNM will explore how best to build on this history to create an effective national diversity strategy for our profession. As a kick-off, we are pleased to welcome premier speaker Beverly Malone, CEO of the National League for Nursing and one of *Ebony Magazine's* 100 most influential African Americans. We are also proud to welcome closing premier speaker Ina May Gaskin. Thirty-five years after initial publication of her landmark work, *Spiritual Midwifery*, Gaskin continues to be an articulate champion for normal physiologic birth, midwifery, and for increased national focus on the persistent tragedy of maternal mortality.

Women need midwives more than ever before. Under the Affordable Care Act, more women will have access to care, and yet midwives still fight for the ability to practice to the full extent of their education and training, while, at the same time, half of US counties have no OBGYNs. A recent ACNM survey shows that most women aren't getting the kind of health care they want and need. The evidence is clear that midwives, with our commitment to normal, physiologic birth and woman-centered care throughout the lifespan, will be an ever-more important part of the solution.

It's a critical moment in time for our profession. Don't miss this opportunity to add your harmony to the rising voice of midwifery!

## Ask Your Employer to Pay Your Way

The ACNM Annual Meeting & Exhibition is the premier professional development opportunity for midwives and other women's health professionals. Your employer may be willing to pay some or all of your expenses to attend. Visit [www.midwife.org/Get-Employer-Support](http://www.midwife.org/Get-Employer-Support) for a template letter to format your request.

## What midwives say about the ACNM Annual Meeting:



**"Besides reading current literature, attending the conference was a way to learn new techniques and ideas regarding midwifery."**

**"Networking is extraordinary."**

**"Essential for all CNM/CMs."**

**"It is a great gathering of midwives! This never happens to such a degree outside of the annual meeting."**

**"The quality of the meeting including education and exhibits keeps getting better every year."**

**"Great opportunity to brush up on the latest practice and re-learn or gain new skills."**

**"It is a great opportunity to connect with other midwives, see old friends, learn new things, and take a break from the daily grind and recharge with people who have the same values re: women's health care."**

**"It is a great opportunity to connect with other midwives, see old friends, learn new things, and take a break from the daily grind and recharge with people who have the same values re: women's health care."**

*Comments from the ACNM 57<sup>th</sup> Annual Meeting evaluation survey.*

## Important Dates

- **March 4:** Deadline to submit committee meeting request form. See [surveymonkey.com/s/5XLGTTK](http://surveymonkey.com/s/5XLGTTK).
- **March 4:** Early bird registration deadline: lowest prices!
- **May 6:** Last day to book your hotel reservation in our room block at our low rates— book today to lock in your rate and room!
- **May 23:** Advance registration deadline: still discounted prices. After May 23, anyone needing to register must do so onsite.

# Featured Speakers

ACNM Annual Meeting premier sessions address topics of broad significance and feature nationally-recognized advocates for maternal health.

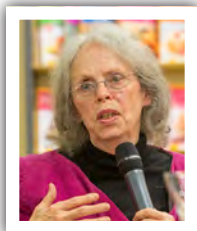


**Beverly Malone, PhD, RN, FAAN**  
**Innovations in Global and Diversity Initiatives: A Midwifery and Nursing Challenge**

Saturday, June 1, 8:30–9:30AM

Premier speaker Beverly Malone will explore both the current US and global midwifery and nursing environments. With a focus on demographic disparities, she will identify strategies of intervention in reshaping and transforming the present reality to meet the health care needs of those we serve. Examples will be drawn from the Institute of Medicine's "Future of Nursing Report," non-traditional programs, and the power of mentoring and cultural humility.

Chief executive officer of the National League for Nursing since February 2007, Dr. Beverly Malone is among America's most vocal leaders in the national conversation about the nursing and nurse educator shortage, and the role of nursing in ensuring access to safe, quality, culturally competent care to diverse patient populations, domestically and globally. In 2010, the year she was ranked 29 among the 100 Most Powerful People in Healthcare by *Modern Healthcare* magazine, Dr. Malone served on the Institute of Medicine's Forum on the Future of Nursing Education, contributing to the IOM's groundbreaking report, "The Future of Nursing: Leading Change, Advancing Health," and on the Advisory Committee on Minority Health, a federal panel established to advise the US Secretary of Health and Human Services. Her distinguished career has mixed policy, education, administration, and clinical practice.



**Ina May Gaskin, MA, CPM, PhD (Hon.)**  
**Common Sense, Childbirth, and the Future of Midwifery**

Sunday, June 2, 2:00–3:00PM

Ina May Gaskin is founder and director of The Farm Midwifery Center, located near Summertown, Tennessee. She is author of *Spiritual Midwifery*, and her newest book, *Birth Matters: A Midwife's Manifesta*, was published in 2011. Ms. Gaskin was president of Midwives' Alliance of North America from 1996 to 2002. In 1997, she received the ASPO/Lamaze Irwin Chabon Award and the Tennessee Perinatal Association Recognition Award. In 2003 she was chosen as Visiting Fellow of Morse College, Yale University. In 2009, she was conferred with the title of Honorary Doctor by the Faculty of Health and Human Sciences of Thames Valley University in London, England. In 2011, she was chosen as one of 4 recipients of the Right

Livelihood Award (also known as the Alternative Nobel Prize).

Ms. Gaskin has lectured widely to midwives and physicians throughout the world. Her promotion of a low-intervention but extremely effective method for dealing with one of the most-feared birth complications, shoulder dystocia, has resulted in that method being adopted by a growing number of practitioners.



**Rebecca L. Dekker, PhD, RN, APRN**

Thursday, May 30, 7:00–8:00PM  
at the First-Timer's Orientation

Rebecca Dekker had her first baby in the "usual manner." With her second pregnancy, she wanted a different experience—one that allowed her to have the birth she envisioned for herself, not tethered, food- and fluid- restricted. She researched birth options, found herself in midwifery care, and had the birth she envisioned. But she did not stop there. Instead she envisioned all women having the birth they want, grounded in evidence-based maternity care practices and safer, informed birth options.

Dr. Dekker is an Assistant Professor of Nursing at the University of Kentucky. Her research has been recognized with many awards, including the Young Investigator Award from the Cleveland Clinic Institute for Heart-Brain Medicine and the Promising Young Investigator Award from the American Heart Association. Dr. Dekker is a board-certified adult clinical nurse specialist. She is a member of *ImprovingBirth.org*, an initiative advocating for evidence-based maternity care practices and safer, informed birth options.

## Stay tuned for more announcements!

Watch [www.midwife.org/am](http://www.midwife.org/am) as we announce the additional premier speakers who will present at the:



**Opening General Session**

Thursday, May 30, 2:00–4:00PM

**Joint Risk Management**

Friday, May 31, 3:45–4:45PM

**Therese Dondoro Lecture**

Sunday, June 2, 8:45–9:45AM

*This annual premier session is sponsored by the A.C.N.M. Foundation.*

# Education Sessions and Workshops

No matter your schedule, experience, or practice setting, we have a program for you!

The educational line-up includes direct clinical practice matters, updates on changing state and national laws, regulations and quality initiatives, and ongoing efforts to improve access to safe maternity care globally. Register for the full meeting and earn as many as 26 contact hours.

## Tracks

Customize your education experience by your area of interest.

Visit [www.midwife.org/AM2013-Workshops](http://www.midwife.org/AM2013-Workshops) to search for sessions in the following tracks:



**Clinical Issues:** Midwives in active clinical practice can learn how to apply the latest research to everyday care. Learn the best practices in primary care, counseling and patient education, electronic health records, medications, and more.



**Education:** Are you a teacher, preceptor, or mentor? Do you help educate nurses and medical residents in your practice? Choose the education track to learn how you can best promote physiologic birth, enhance your students' experience, and incorporate the latest guidelines into your curriculum.



**Global Midwifery:** Get started in international work or help prepare qualified midwives to work abroad. You'll learn about new maternal and newborn health projects, how to give care in a limited resource setting, and the latest international health research.



**The Business of Midwifery:** Many midwives are also small business owners or handle administrative aspects of their practice. Tap into this track to perfect your understanding of professional liability, how to get paid, how to improve your quality standards, and how to market your practice.



**The Public Perception of Midwifery:** We want the whole country to know about and value midwives, and this starts with midwives understanding and getting involved with state and federal legislation and promoting and writing about our profession. Make your voice heard!



**Students:** Students are the future of midwifery. Students and new grads can take advantage of opportunities to study for the national certification exam, review their skills, and learn how to find the best employment fit.



**Research:** Stay on the cutting edge of the latest research topics related to clinical and international practice and support your colleagues who work in research and academia by attending research forums and voting on the best poster presentations.

## Education Sessions

Choose from more than 75 made-for-midwives sessions covering gynecology, primary care, AP, IP, postpartum, and more! Register for the full conference and earn up to 2.6 CEUs and 18 pharmacology hours. To learn more about specific education session titles, descriptions, and speakers, visit [www.midwife.org/AM2013-Workshops](http://www.midwife.org/AM2013-Workshops).

- Your Paycheck is at Stake-Why Health IT matters
- Female Sexual Dysfunction Evaluation, Diagnosis and Coding
- Ankyloglossia: Tongue-tie Evaluation, Management and Treatment
- Ensuring Seamless Transition From Home or Birth Center to the Hospital
- Keys to Successful Evaluation and Management of Chronic Pelvic Pain
- What Do Pregnancy Complications Tell Us About Future Chronic Disease Risk?
- Primary Care Management of Anxiety and Depression, Asthma and Headaches
- Understanding and Negotiating Employment Contracts for Midwives



## Workshops

Our workshops are intensive, full-day or half-day courses where you can really delve into a subject. Here's a sample of 2013 workshop offerings:

- Refining the Art of Perineal Repair
- Labor and Birth in Water: How Childbearing Women and Research are Changing Birth Practices
- Evaluation and Management of Pelvic Pain Disorders
- Birth Simulation in Midwifery Education: Bringing Low Incidence Emergencies to Life
- Complementary Modalities in Women's Health: New Directions

## Featured Workshops

### Advanced Life Support in Obstetrics—3 Day Course

Tuesday, May 28, 12:00PM–4:00PM, Wednesday, May 29, 8:00AM–4:00PM, and Thursday, May 30, 8:00AM–12:00PM

The Advanced Life Support in Obstetrics (ALSO) program helps maternity care providers develop the knowledge and skills needed to manage potential

emergencies during the perinatal period. With pre-course syllabus reading and minimal lecture time, this course offers an interactive learning environment utilizing pelvic mannequins and other appropriate medical equipment. Evidence-based, hands-on skill/team building is what sets the ALSO Program above other maternity care programs. Participants will obtain 5-year ALSO status after successful completion of the written test and megadelivery testing station. *Space is limited to 60 participants. Registration fee: \$500. Participants must attend all 3 days.*



#### ALSO Faculty:

Larry Leeman, MD (Co-chair)	Rebecca Leeman, CNM
Helen Welch, CNM (Co-chair)	Carl Olden, MD, FAAFP
Kim Dowat, CNM	Janice Taleff, CNM
Robert Gobbo, MD, FAAFP	Alice Taylor, CNM
David Gregory, MD, FAAFP	Ellen Tilden, CNM
Sally Hersh, CNM, MSN	
Valerie King, MD, MPH, FAAFP	

#### Exam Prep

Wednesday, May 29, 8:00AM–4:00PM,  
and Thursday, May 30, 9:00AM–1:30PM

This workshop will provide students and new graduates with an opportunity for exam preparation. Day 1 will focus on the content covered by the AMCB certification exam. Experts in each topic will give students an overview of the content with an opportunity to begin formulating a plan of study. Day 2 will explore interactive case studies and practice questions on the main topical areas for the AMCB midwifery examination. Students can register for one or both days. At the conclusion of the sessions, students should have completed an individualized plan for continuing review.

## The Events

In addition to the educational aspects, an important piece of the ACNM Annual Meeting continues to be networking and interfacing with midwives from around the country. ACNM's Annual Meeting is *the place* for midwives to come together, share their experiences with old friends, and connect with new ones.

### Midwifery Business Network Reception

Wednesday, May 29, 7:00–9:00PM  
Tickets \$50

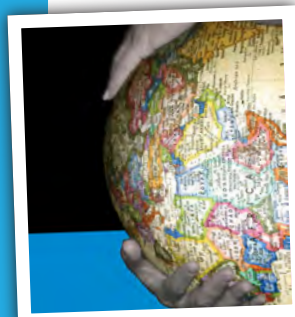
Make contacts, share information, and problem solve with others interested in the business aspects of midwifery practice, and see what's in store for Midwifery Works! 2013, ACNM's fresh new take on the annual Midwifery Business Network fall conference.



### Division of Global Health Reception

Thursday, May 30, 7:00–9:00PM  
Tickets \$25

Learn about exciting new education and training programs, and network with midwives who work abroad.



### Midwives of Color Reception

Thursday, May 30, 8:00–10:30PM  
Tickets \$45, Student Tickets \$15

Join your colleagues and friends for a festive evening of fun, food, dancing, and networking. Share experiences, interests, issues, and even a few surprises! All midwives and students are welcome. This event includes a live auction with proceeds going toward the Midwives of Color Watson Basic Midwifery Student Scholarship.





## A.C.N.M. Foundation Fundraiser

Friday, May 31, 8:00 – 10:00PM • Tickets \$50, Student Tickets \$30

The A.C.N.M. Foundation holds its annual fundraiser at the ACNM Annual Meeting. Plan on an evening of fun with your midwifery colleagues while supporting the profession you love. Stay tuned for announcements about what to expect at this exciting event in early 2013.

## Catch the Rhythm ★ Raise Our Voice!



## Midwives-PAC Rally: Catch the Rhythm, Raise Our Voice!

Saturday, June 1, 4:00–6:00PM • Tickets \$50, Student Tickets \$15

The Midwives-PAC (Political Action Committee) plays an important role in advancing ACNM's legislative agenda through campaign contributions to federal legislators. This zero overhead event will once again showcase a silent and live auction, as well as a mystery bourbon/wine pull. Get ready for some fun!

## Awards Ceremony and Midwifery Celebration Party

Awards Ceremony: Saturday, June 1, 7:00PM  
Reserve your seat with plated dinner service \$10

Celebration Party: Saturday, June 1, 9:00PM  
Free for meeting attendees • Guest Tickets \$35

Come be inspired by the stars of our profession, then hit the dance floor with them! \$10 reserves your seat and a plated dinner at the semi-formal awards ceremony— space is not guaranteed without a reservation. Then the doors open to everyone for the free midwifery celebration after-party at 9! These events are always huge favorites with Annual Meeting attendees.

## The Farm Tour

Monday, June 3

The Farm was founded by closing premier speaker Ina May Gaskin and played an historic role in the development of US midwifery. ACNM is working with The Farm to schedule a tour for ACNM Annual Meeting attendees. Stay tuned to [www.midwife.org/am](http://www.midwife.org/am) for details as they become available and peruse The Farm at [www.thefarm.org](http://www.thefarm.org).

## Student Activities and Events

Each year, more than 200 midwifery students attend the ACNM Annual Meeting & Exhibition.

Special options make this experience more affordable than you might expect. The regular ACNM Student Member registration fee is just \$250. Plus, student workshops are discounted 50%. Learn more about special events and education tracks designed especially for students at [www.midwife.org/students](http://www.midwife.org/students).



# Schedule At-A-Glance

	TUESDAY, MAY 28	WEDNESDAY, MAY 29					THURSDAY, MAY 30				
7:00		Pre-conference meetings and workshops					Division/Committee Meetings 7:00-8:00AM				
7:30											
8:00											
8:15											
8:30											
8:45											
9:00											
9:15											
9:30				Affiliate Leadership Skills Workshop 8:00AM-12:00PM						Education Sessions 9:00-10:00AM	
9:45											
10:00											Workshops 8:30AM-12:00PM
10:15											
10:30											
10:45											
11:00											
11:15											
11:30											
11:45											
12:00		ALSO Course 8:00AM-4:00PM				Workshops 8:00AM-4:00PM; 8:30AM-12:00PM; 1:00-4:30PM					
12:15			Foundation Board Meeting 8:00AM-5:00PM								
12:30											
12:45											
1:00											
1:15											
1:30											
1:45	ALSO Course 12:00-4:00PM										
2:00											
2:15											
2:30											
2:45											
3:00											
3:15											
3:30											
3:45											
4:00											
4:15											
4:30											
4:45											
5:00											
5:15											
5:30											
5:45											
6:00											
6:15											
6:30											
6:45											
7:00											
7:15											
7:30											
7:45											
8:00											
8:30											
9:00											
9:30											
10:00											
10:30											
11:00											



FRIDAY, MAY 31			SATURDAY, JUNE 1				SUNDAY, JUNE 2		MONDAY, JUNE 3
Division/Committee Meetings 7:00-8:00AM			Division/Committee Meetings 7:00-8:00AM				Div/Comm Meetings 7:00-8:00AM	Education Sessions 7:30-8:30AM	ACNM Board of Directors Meeting 8:00-10:00AM
Education Sessions 9:00-10:00AM			Premier Session 8:30-9:30AM				Therese Dondero Lecture 8:45-9:45AM		
Opening Business Meeting ACNM Business and Motions 9:30-11:30AM			Exhibit Hall and Midwifery Market Open 9:30AM-2:00PM with buffet brunch from 10:30AM-12:00PM		ACNM Affiliate Meeting 10:00AM-2:00PM with lunch		Closing ACNM Business Meeting 10:15AM-12:15PM		
Exhibit Hall and Midwifery Market Open 11:30AM-3:30PM with lunch 12:00-1:30PM	Student lunch with ACNM Board and Staff 11:30AM-1:30PM	Education Sessions 1:00-2:00PM					Education Sessions 10:00-11:00AM	Education Sessions 12:45-1:45PM	
	Posters 1:30-3:00PM	Education Sessions 2:30-3:30PM	Education Sessions 2:15-3:15PM	Closing Premier Session 2:00-3:00PM	Education Sessions 3:15-4:15PM	Education Sessions 12:45-1:45PM			
Premier Session Joint Risk 3:45-4:45PM			Education Sessions 3:30-4:30PM		Midwives-PAC Rally 4:00-6:00PM		Education Sessions 2:00-3:00PM		ACNM Board of Directors Meeting 4:30-8:00PM
Education Sessions 5:00-6:00PM			Education Sessions 4:45-5:45PM				Education Sessions 3:30-4:30PM		
Regional Meetings 6:30-7:30PM			President's Reception (invitation only) 6:00-7:00PM						
Foundation Fundraiser 8:00-10:00PM			Midwifery Awards Dinner and Celebration Party 7:00PM-12:00 MIDNIGHT						

# The Exhibition

The 2013 ACNM Exhibit Hall schedule and activities are custom-made for you!

Don't miss the chance to network, browse new products, shop the Midwifery Market, and drop by Everything ACNM—a dedicated area showcasing the best resources ACNM has to offer.

## Grand Opening Reception

Don't miss the opportunity to speak with the 2013 exhibitors and your fellow attendees! Beverages, including beer and wine, and plenty of food will be available.

The Opening Reception is open to all registrants and will be held Thursday, May 30, 4:00–6:30PM.

## Midwifery Market and Art Bazaar

The Midwifery Market and Art Bazaar is open to both general retailers and ACNM affiliates interested in selling items for fundraising purposes. Whether you're fundraising for your affiliate or just browsing the booths, you're sure to find something special for your colleagues and family or a treat for yourself at the Midwifery Market.

### Exhibit Hall Hours

#### Thursday, May 30

4:00–6:30PM

Exhibit Hall Open with Welcome Reception

#### Friday, May 31

11:30AM–3:30PM

Exhibit Hall and Midwifery Market Open with Lunch Served Noon-1:30PM

#### Saturday, June 1

9:30AM–2:00PM

Exhibit Hall and Midwifery Market Open with Buffet Brunch Served 10:30AM-Noon

See a list of all current exhibitors at [www.bit.ly/M6ws9](http://www.bit.ly/M6ws9).

## Sponsor Supported Activities

### The Midwifery Profession: Frontline Promoters of Oral Health for Pregnant Women and Newborns!

May 31, 6:45–7:45AM • Sponsored by The Oral Health Nursing Education and Practice (OHNEP) Program and The National Interprofessional Initiative on Oral Health (NIIOH)

Oral health is key to overall health and well-being of pregnant women and their babies. Learn what midwives need to know in 2013 about oral health during pregnancy and playing a key role in preventing the most common disease of childhood, Early Childhood Caries (ECC).

### Trichomonas Vaginalis: The Forgotten STI

May 31, 11:45AM • Sponsored by Hologic

*Trichomonas vaginalis* infections are not reportable and published data likely underestimates true prevalence. What do clinicians need to know in 2013 to reduce adverse outcomes associated with trichomonas infections?

Presented by Kimberle Chapin, MD, DABMM, FCAP, Director of Microbiology and Infectious Diseases Molecular Diagnostics, Rhode Island Hospital; Professor Pathology and Medicine, Brown Medical School, Providence, RI.

# Hotel and Travel

NEW THIS YEAR! ACNM has partnered with Orchid Event Solutions as our official housing company in order to provide a hassle-free booking process for attendees.

This year's ACNM-designated hotels offer discounted rates for all styles and budgets plus complimentary in-room Internet access as a benefit for booking through Orchid. **DEADLINE: Reservations must be received by May 6, 2013, to guarantee availability and rates.**

## Make a Reservation

Book online, print a reservation form, or modify an existing reservation at [www.midwife.org/AM2013-HotelAndTravel](http://www.midwife.org/AM2013-HotelAndTravel). Book by phone at 1-888-665-1368 or International at +1-801-505-5257 (7:00AM–6:00PM MST, Monday - Friday). Hotel options include:

- Renaissance Nashville Hotel  
(Headquarters hotel connected to convention center)
- Sheraton Nashville Downtown Hotel  
(within walking distance of convention center)
- Best Western Downtown Convention Center  
(within walking distance of convention center)

**Beware of False and Fraudulent Housing Claims.** ACNM has designated Orchid as the only housing provider for the 58<sup>th</sup> Annual Meeting & Exhibition. When attendees reserve rooms at hotels outside of our block or through Internet providers, ACNM can be exposed to financial penalties and fees, which in turn could translate to higher registration fees in the future. Help ACNM make this meeting a success! Remember to book early and only use official meeting hotels.



# Registration Form

## Badge Information and Mailing Address

ACNM MEMBERSHIP NUMBER		PRACTICE/INSTITUTION/EDUCATION PROGRAM	
NAME		CREDENTIALS	
STREET ADDRESS			
CITY	STATE	POSTAL CODE	COUNTRY
PHONE	FAX	E-MAIL	

Registration Type	Early Bird <i>by March 4, 2013</i>	Advance <i>March 5-May 23, 2013</i>	On-Site <i>After May 23, 2013</i>
<input type="checkbox"/> Active Member *	<input type="checkbox"/> \$450	<input type="checkbox"/> \$535	<input type="checkbox"/> \$590
<input type="checkbox"/> Active Supporting Member	<input type="checkbox"/> \$375	<input type="checkbox"/> \$460	<input type="checkbox"/> \$515
<input type="checkbox"/> Associate Member (Friend)	<input type="checkbox"/> \$375	<input type="checkbox"/> \$460	<input type="checkbox"/> \$515
<input type="checkbox"/> Student **	<input type="checkbox"/> \$250	<input type="checkbox"/> \$295	<input type="checkbox"/> \$315
<input type="checkbox"/> Non-Member	<input type="checkbox"/> \$670	<input type="checkbox"/> \$755	<input type="checkbox"/> \$910
<input type="checkbox"/> Non-Member Student**	<input type="checkbox"/> \$350	<input type="checkbox"/> \$395	<input type="checkbox"/> \$415
<input type="checkbox"/> One-Day Registration Member***	<input type="checkbox"/> \$195	<input type="checkbox"/> \$195	<input type="checkbox"/> \$195
<input type="checkbox"/> One-Day Registration Non-Member***	<input type="checkbox"/> \$215	<input type="checkbox"/> \$215	<input type="checkbox"/> \$215

\* You must provide your ACNM member number. \*\* A valid student ID may be requested at registration on-site. \*\*\*Two-Day Maximum

If you choose a one day registration, please select the day(s):

Thursday  Friday  Saturday  Sunday

### Optional Tickets

- \_\_\_ x \$50 = \$\_\_\_ Midwifery Business Network Reception, **Wednesday, May 29 • 7:00-9:00PM**
- \_\_\_ x \$0 = \$\_\_\_ First Timer's Orientation, **Thursday, May 30 • 7:00-8:00PM**
- \_\_\_ x \$35 = \$\_\_\_ Welcome Reception **Guest Ticket**, **Thursday, May 30 • 4:00-6:30PM**
- \_\_\_ x \$25 = \$\_\_\_ Division of Global Health Reception, **Thursday, May 30 • 7:00-9:00PM**
- \_\_\_ x \$45 = \$\_\_\_ Midwives of Color Reception, **Thursday, May 30 • 8:00-10:00PM**
- \_\_\_ x \$15 = \$\_\_\_ Midwives of Color Reception **Student Ticket**, **Thursday, May 30 • 8:00-10:00PM**
- \_\_\_ x \$50 = \$\_\_\_ A.C.N.M. Foundation Fundraiser, **Friday, May 31 • 8:00-10:00PM**
- \_\_\_ x \$30 = \$\_\_\_ A.C.N.M. Foundation Fundraiser **Student Ticket**, **Friday, May 31 • 8:00-10:00PM**
- \_\_\_ x \$50 = \$\_\_\_ Midwives-PAC Rally **Members/Guest Ticket**, **Saturday, June 1 • 4:00-6:00PM**
- \_\_\_ x \$15 = \$\_\_\_ Midwives-PAC Rally **Student Ticket**, **Saturday, June 1 • 4:00-6:00PM**
- \_\_\_ x \$10 = \$\_\_\_ **Reserve Your Seat** for the Midwifery Awards Dinner (plated dinner service) **Saturday, June 1 • 7:00-12:00MID**
- \_\_\_ x \$35 = \$\_\_\_ Midwifery Awards Dinner **Guest Ticket**, **Saturday, June 1 • 7:00-12:00MID**
- \_\_\_ x \$0 = \$\_\_\_ Attend Celebration Party Only (no dinner), **Saturday, June 1 • 9:00-12:00MID**
- \_\_\_ x \$30 = \$\_\_\_ Exhibit Hall Only **Guest Ticket** (daily fee)

**Subtotal = \$** \_\_\_ **+ Workshops \$** \_\_\_ **GRAND TOTAL = \$** \_\_\_

**Payment**  Check  Credit Card:  Visa  Master Card  Discover

Payment can be made by check or credit card. Checks should be made payable to ACNM and must be in U.S. dollars drawn on a U.S. bank.

CREDIT CARD NUMBER	EXPIRATION DATE	SECURITY CODE
PRINT NAME ON CARD	SIGNATURE	

### The Meeting Registration Fees Include:

- Access to sessions (opening, premier, and education sessions)
- Access to research and general poster sessions
- Access to the exhibition including daily meal
- Post-meeting online access to educational sessions and materials and CEU print-on-demand certificates
- Meeting materials and bag
- Coffee breaks
- Welcome Reception
- Midwifery Celebration Party
- First Timer's Reception (*First Time Registrants only*)

### Workshops Full Day \$250 • Half Day \$150

**STUDENT: Full Day \$125 • Half Day \$75**

**ALSO Course • May 28-30, 2013 • \$500**

Tickets are assigned on a first-come, first-served basis. Refer to the Workshop listing on the meeting website for full descriptions. Please list your first and second choices.

1. \_\_\_\_\_
2. \_\_\_\_\_

ACNM makes financial obligations based on the number of tickets sold, we cannot refund tickets unless the workshop is cancelled. In the event of a workshop cancellation, ACNM will reassign you to another workshop of your choice at an equal value or issue a refund.

**Register Online at**  
**www.midwife.org/am**

or mail your registration with payment to

ACNM 2013  
P.O. Box 758898; Baltimore, MD 21275-8896

**Questions?** E-mail: [annualmeeting@acnm.org](mailto:annualmeeting@acnm.org)  
Phone: 240-485-1800

**CANCELLATION AND REFUND POLICY** Please be sure to go to our website at [www.midwife.org/am](http://www.midwife.org/am) for detailed information on the cancellation policies. All cancellations must be submitted in writing. A \$50 cancellation fee will be assessed for all cancellations received on or before Monday, March 4. Between Tuesday, March 5 and Thursday, May 23, a fee of 50% of the registration fee will be assessed. After Thursday, May 23, no cancellation refunds will be granted, except for extenuating circumstances (i.e., accident, illness, etc.) and must include appropriate verification.

## Preliminary Listing of Exhibitors for the 58<sup>th</sup> ACNM Annual Meeting & Exhibition

ACNM Midwives of Color Committee	Frontier Nursing University	Ther-Rx Corporation
A.C.N.M Foundation	Georgetown University—School of Nursing and Health Studies	University of Texas Medical Branch Regional Maternal & Child Health Program
ACNM Political Action Committee/Government Affairs Committee	Group B Strep International	Upsher-Smith Laboratories, Inc.
Ameda Breastfeeding Products	Hologic Inc.	Utah Medical Products
American Academy of Family Physicians	Hopkins Medical Products	Vanderbilt School of Nursing
American Association of Birth Centers	Lexicomp	Waterbirth Solutions
American Midwifery Certification Board	March of Dimes	Wiley
Avion Pharmaceuticals	Midwives Alliance of North America	XYTEX Cryo
Baby K'tan Baby Carriers	Milkin' Cookies	
Bio Oil	National College of Natural Medicine	<b>Midwifery Market</b>
Calmoseptine, Inc.	Organization of Teratology Information Specialists	ACAM Midwifery Center: Guatemala
CerviLenz Inc.	Porter Instrument	Frozen Light
Contemporary Insurance Services	Professional Education Center	Kentucky Affiliate of ACNM
Centering Healthcare Institute	Roche Diagnostics Corporation	MamAmor Dolls
Cook Medical	Sequenom Center for Molecular Medicine	Midwives for Haiti
Cord Blood Registry	Serola Biomechanics, Inc.	Pieces of Bali
Cord Use: Cord Blood Bank	Southcentral Foundation	Piel Canela Perú/Fair Trade Organization
Cribs for Kids	Southern Cross Insurance Solutions, LLC	Thistle Farms
DiaSorin	Teva Women's Health	University of Pennsylvania—Student Midwives
Duchesnay USA	The Gideons International	
Fairhaven Health	The Midwifery Institute of Philadelphia University	<i>List of Exhibitors as of January 8, 2013.</i>
Floradix		

## A Special Thank You to Our Annual Meeting Sponsors



## American College of Nurse-Midwives 58<sup>th</sup> Annual Meeting & Exhibition Nashville, Tennessee ★ May 29–June 2, 2013

ACNM Annual Meeting & Exhibition  
P.O. Box 758898  
Baltimore, MD 21275-8896  
(240) 485-1800  
annualmeeting@acnm.org  
www.midwife.org/am  
www.twitter.com/ACNMmidwives  
www.facebook.com/ACNMmidwives

